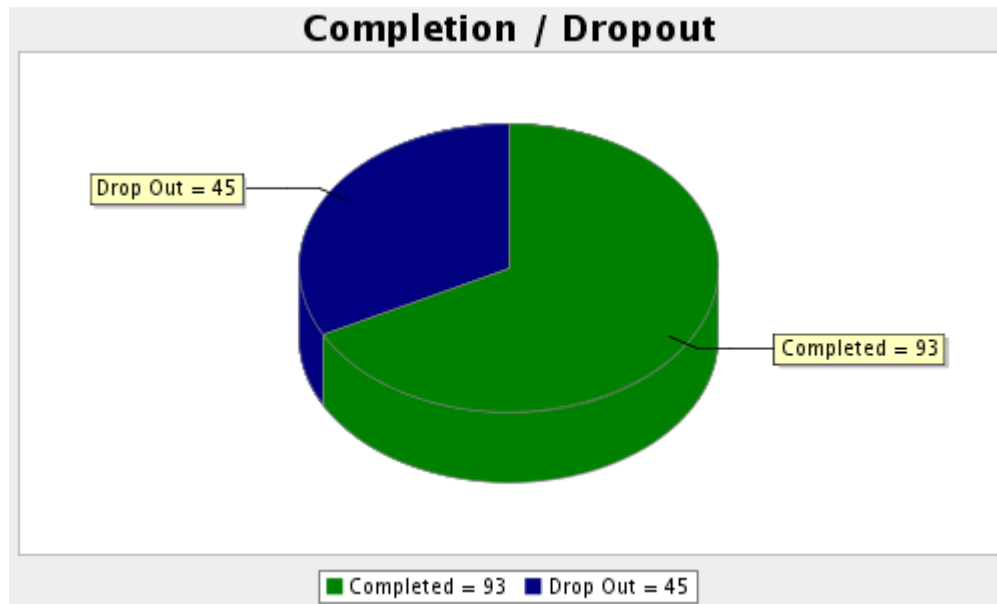


2011 NJLM ANNUAL PERFORMANCE SURVEY

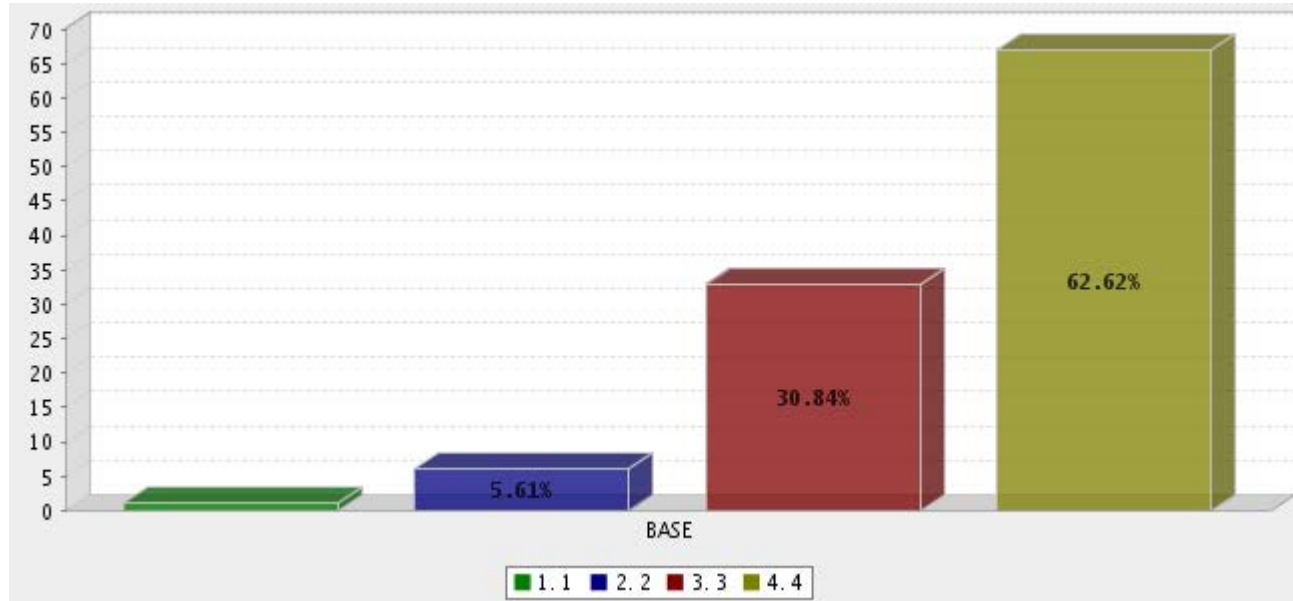
Survey conducted November 18 – December 31, 2011

surveys@citiesnj.com

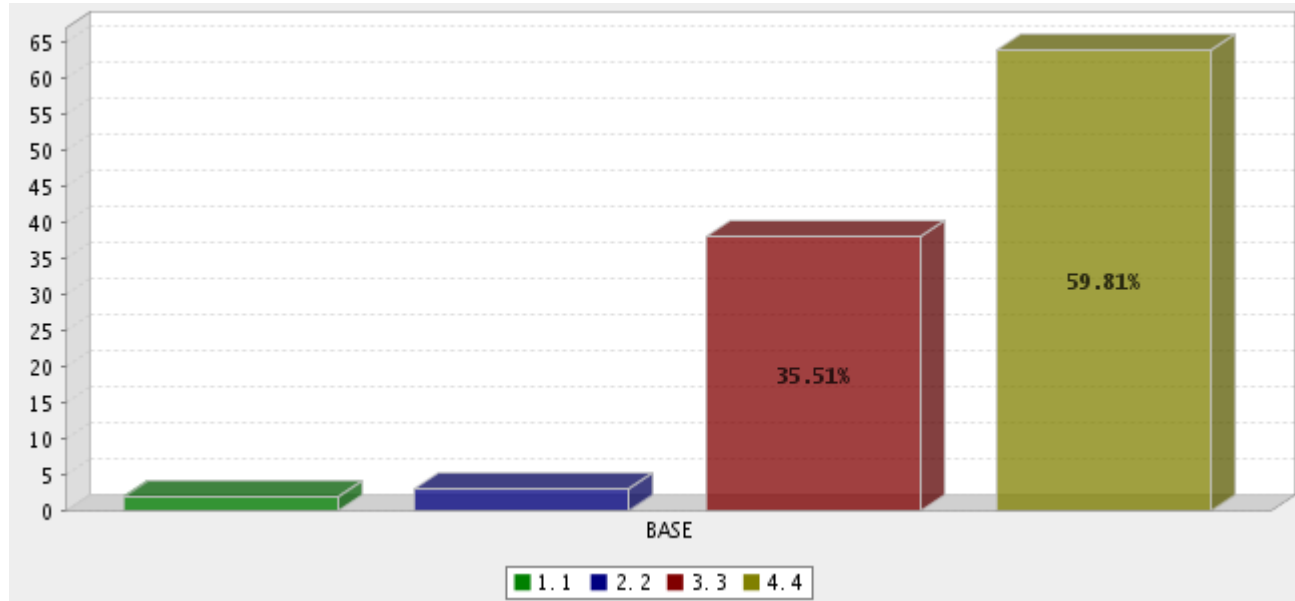
Survey Overview



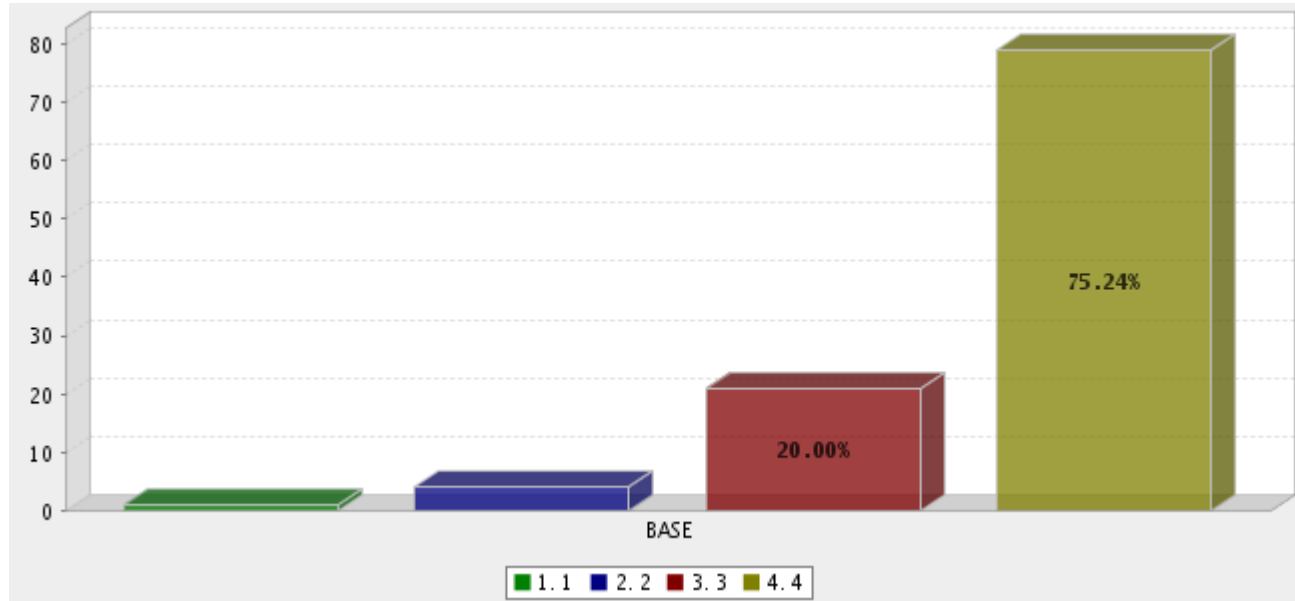
Availability (1 Poor....4 Excellent)



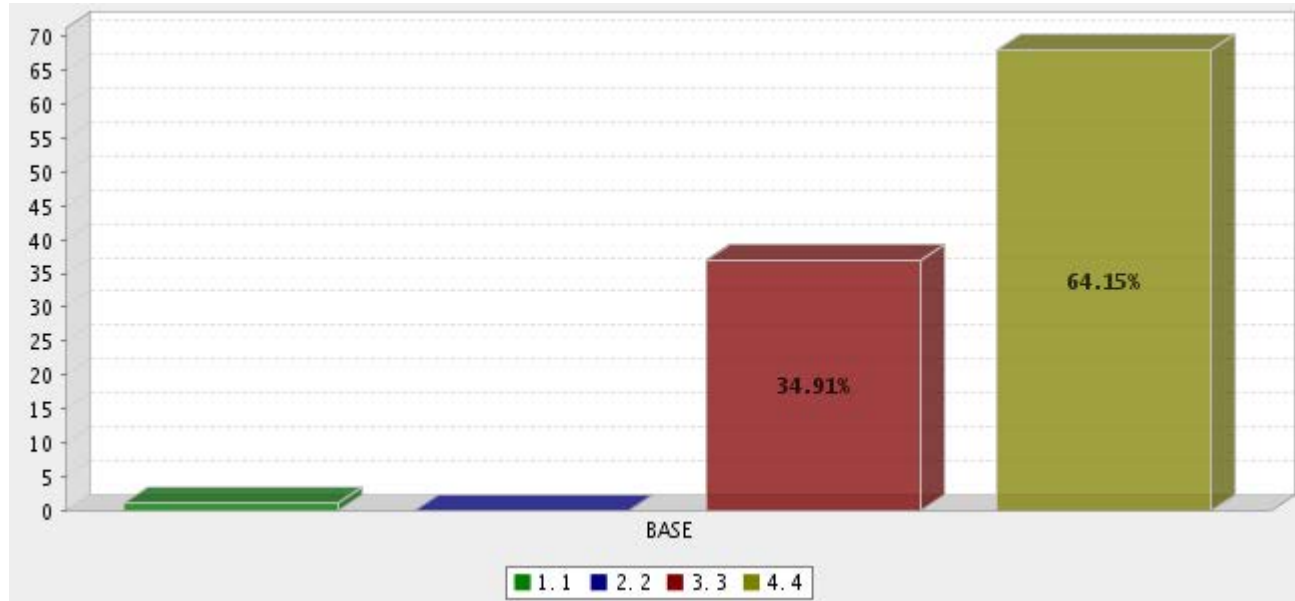
Speed and Quality of Response (1 Poor....4 Excellent)



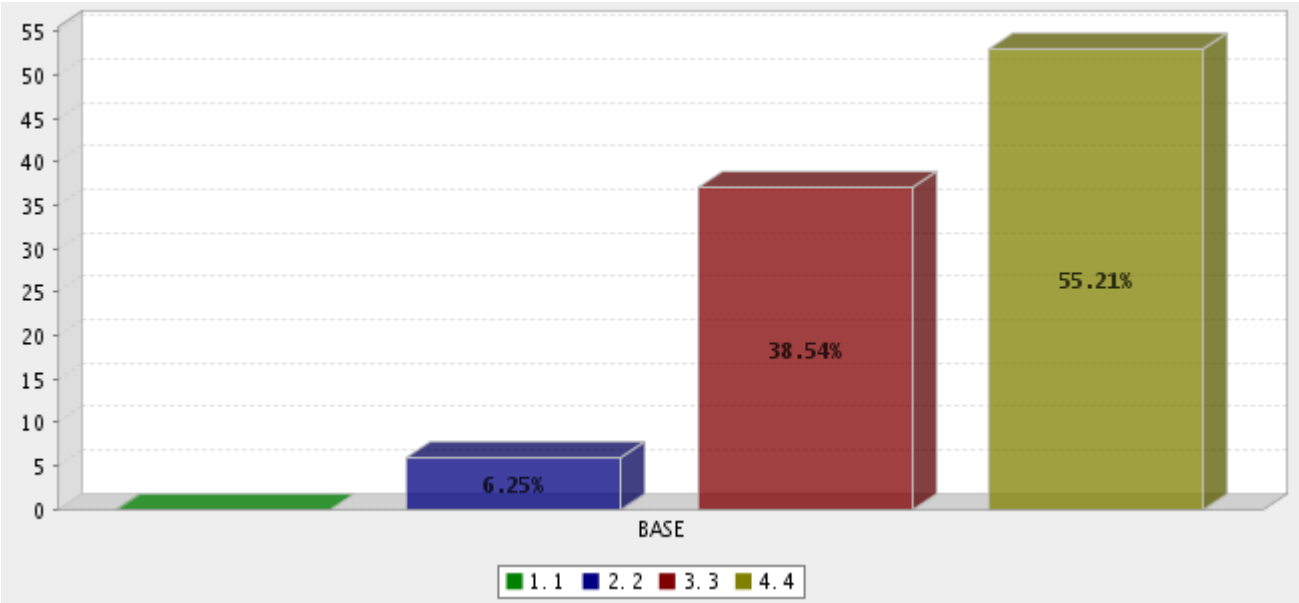
Professional Demeanor (1 Poor....4 Excellent)



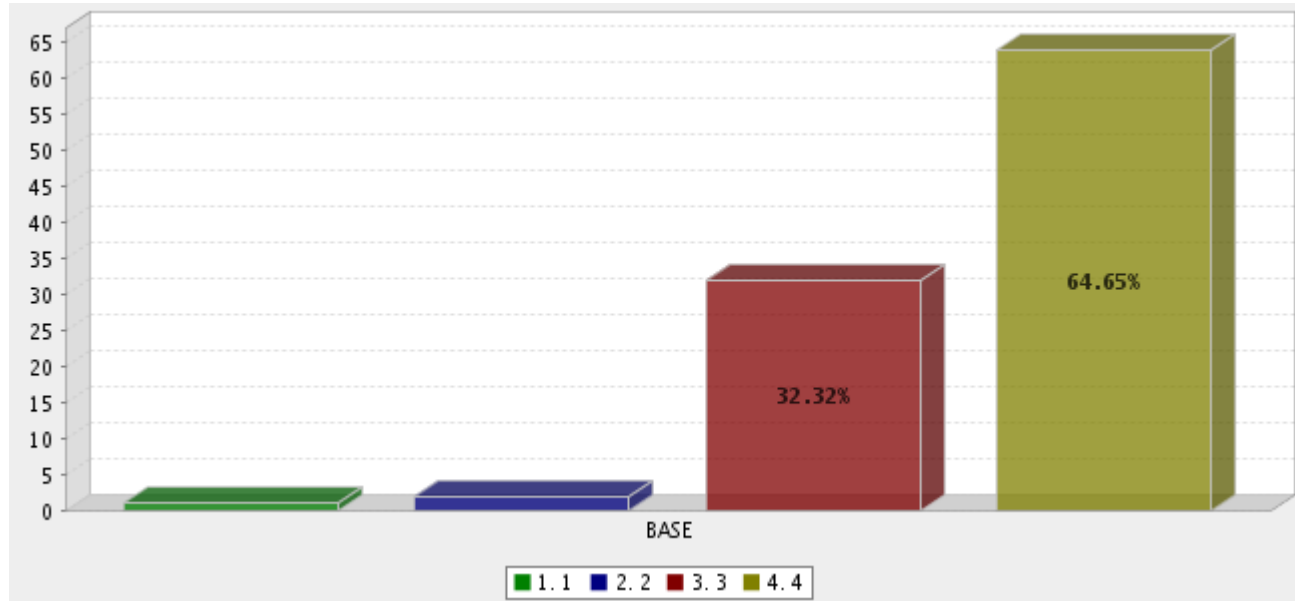
Knowledge of Subject Matter (1 Poor....4 Excellent)



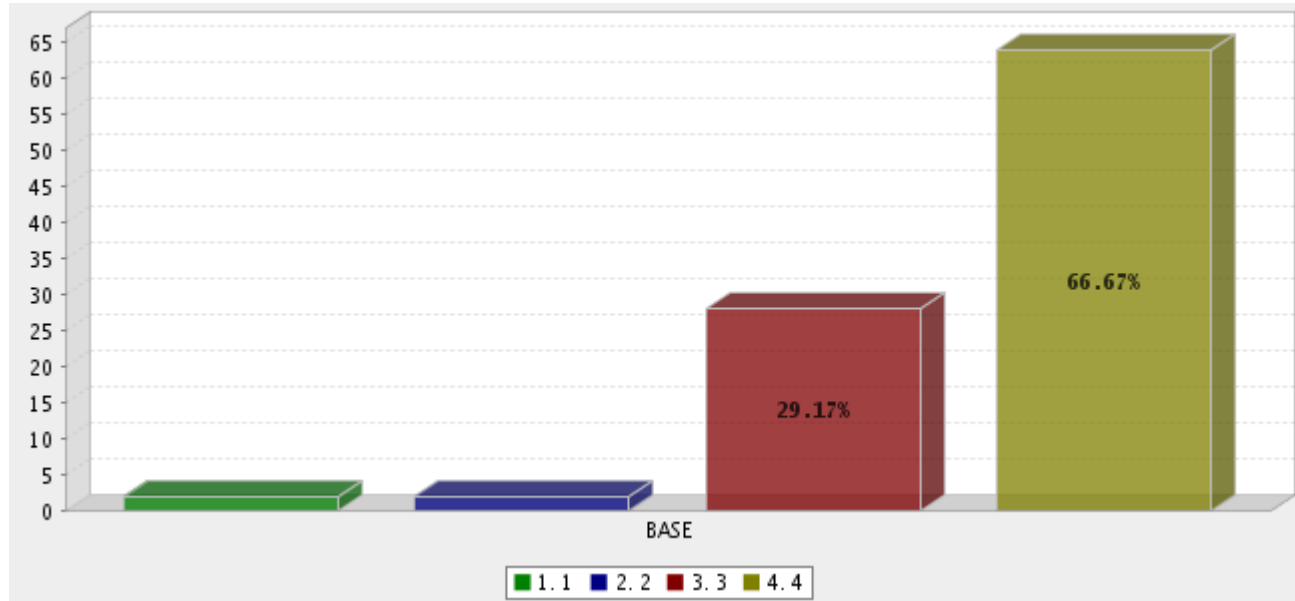
Legislative Advocacy (1 Poor....4 Excellent)



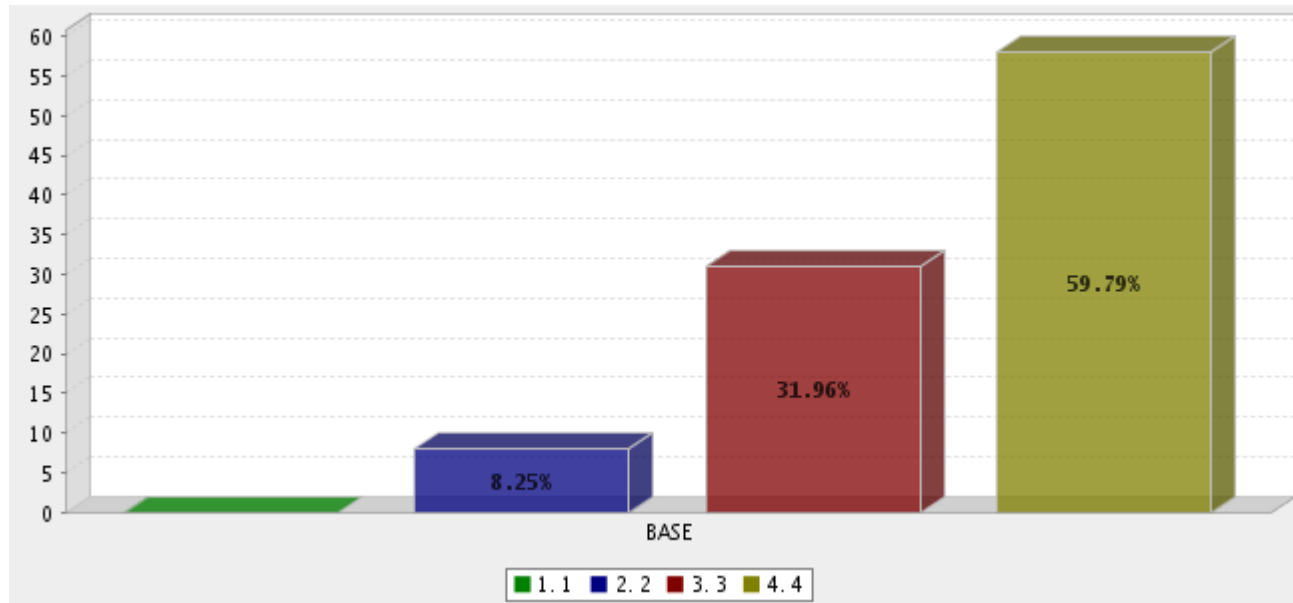
Annual Conference (1 Poor....4 Excellent)



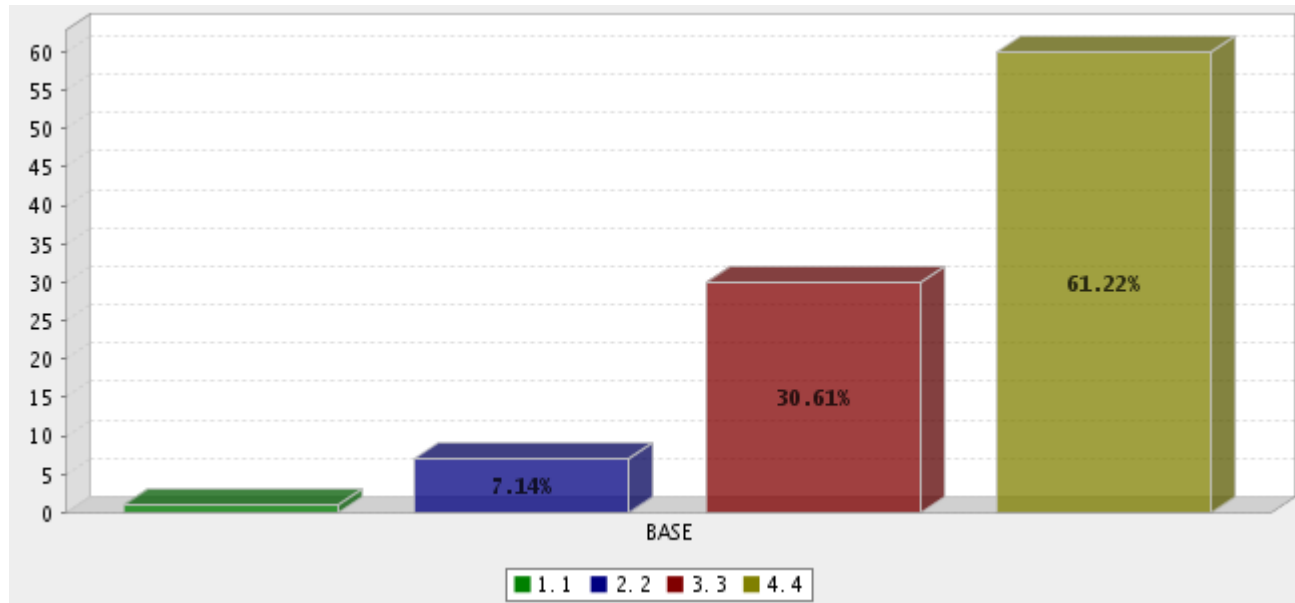
Information on League Issues (1 Poor....4 Excellent)



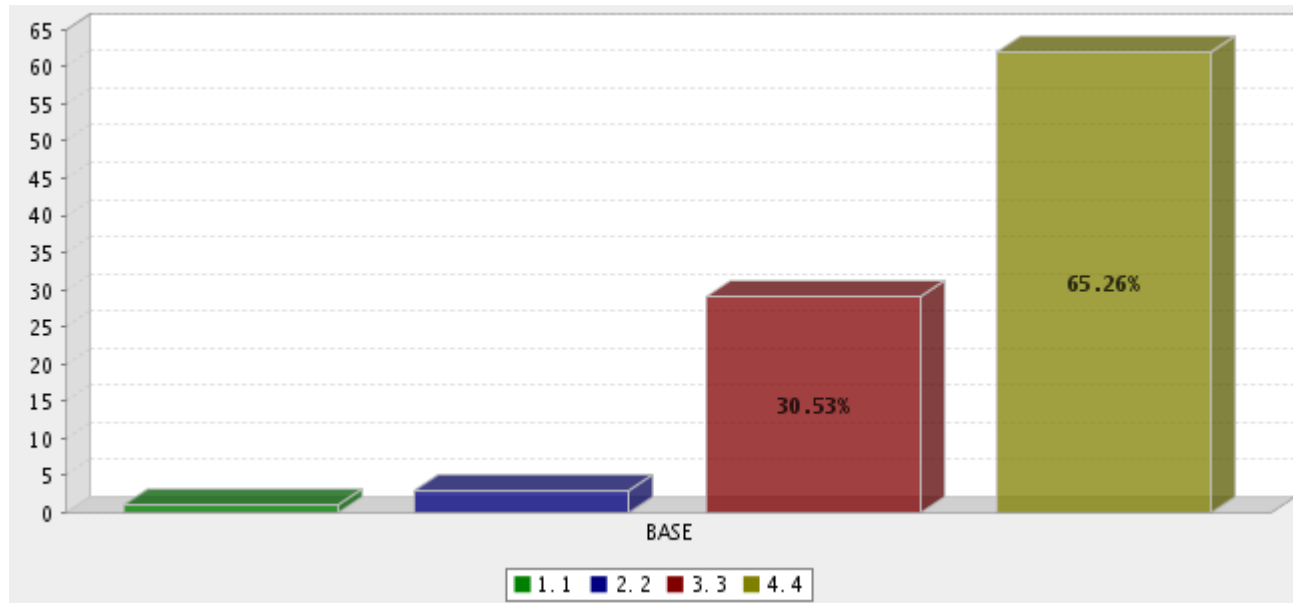
Programs, Seminars, Professional Development (1 Poor...4 Excellent)



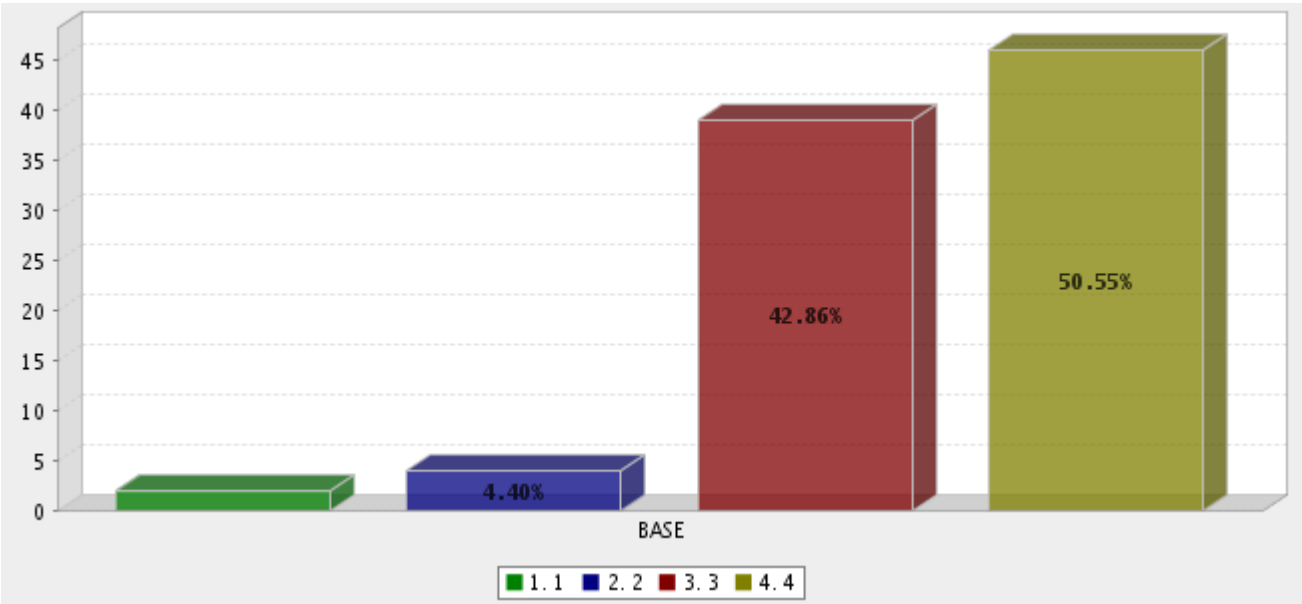
League Publications and Surveys (1 Poor....4 Excellent)



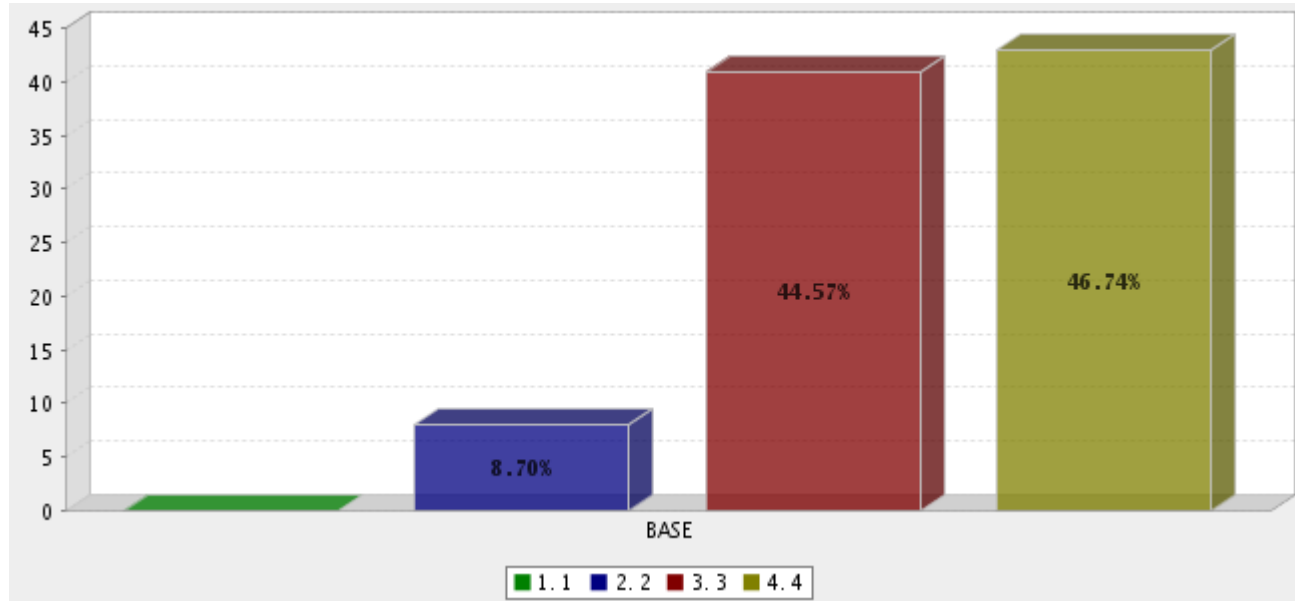
New Jersey Municipalities Magazine (1 Poor....4 Excellent)



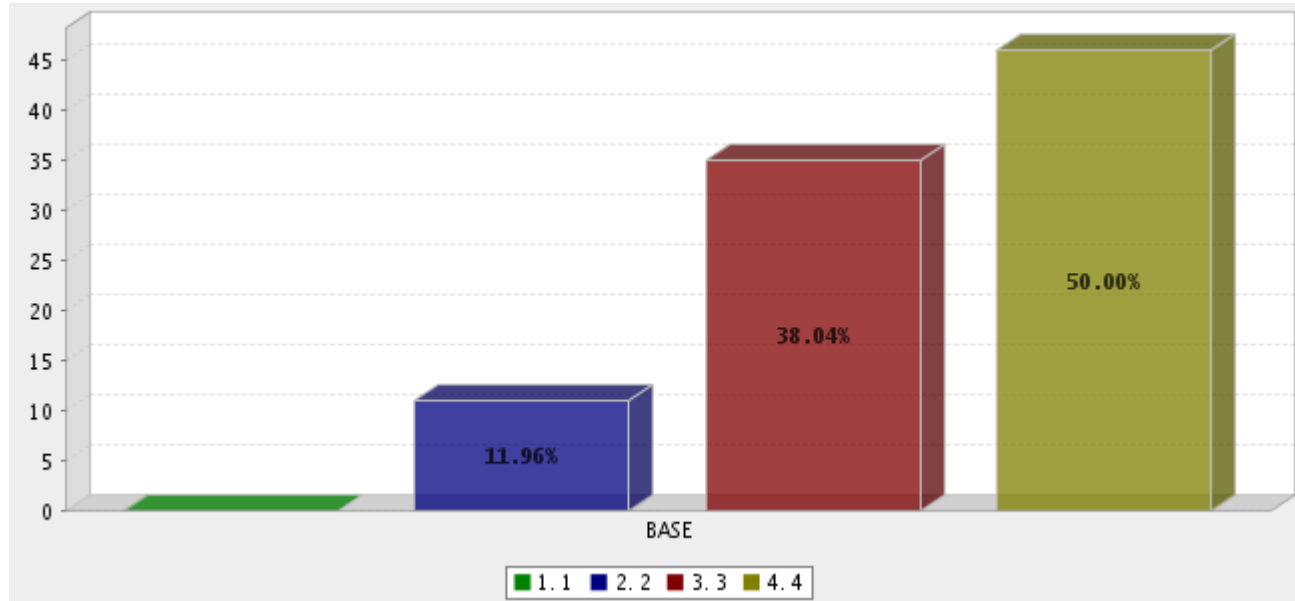
Ordinances and Municipal Information (1 Poor....4 Excellent)



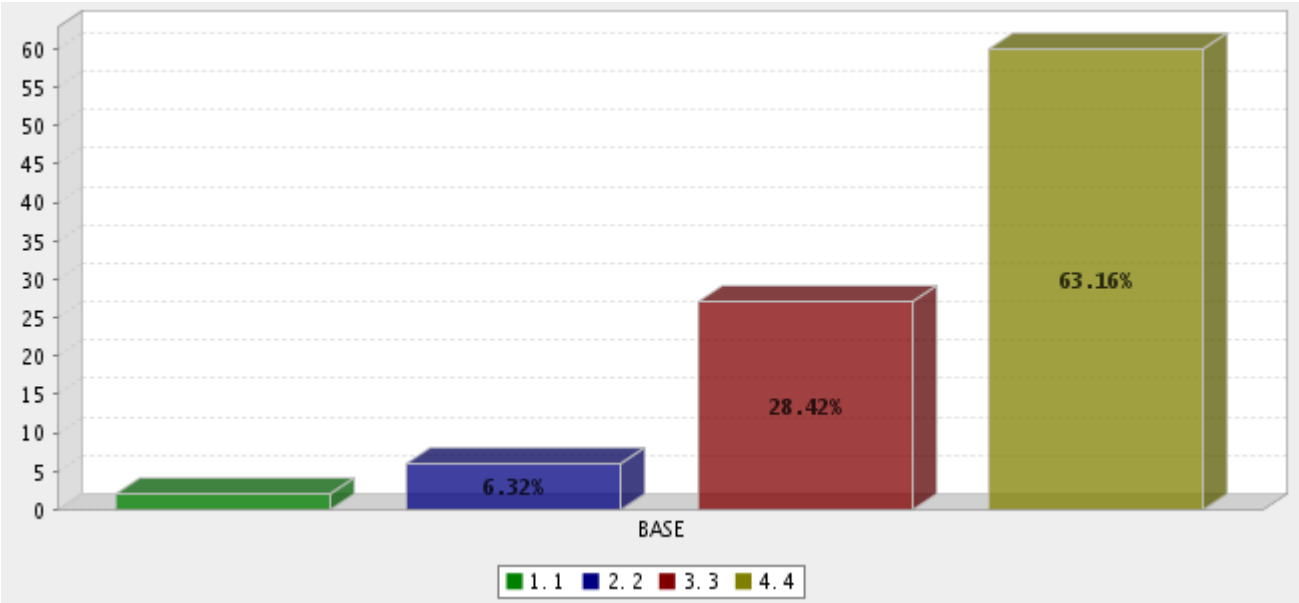
Research (1 Poor....4 Excellent)



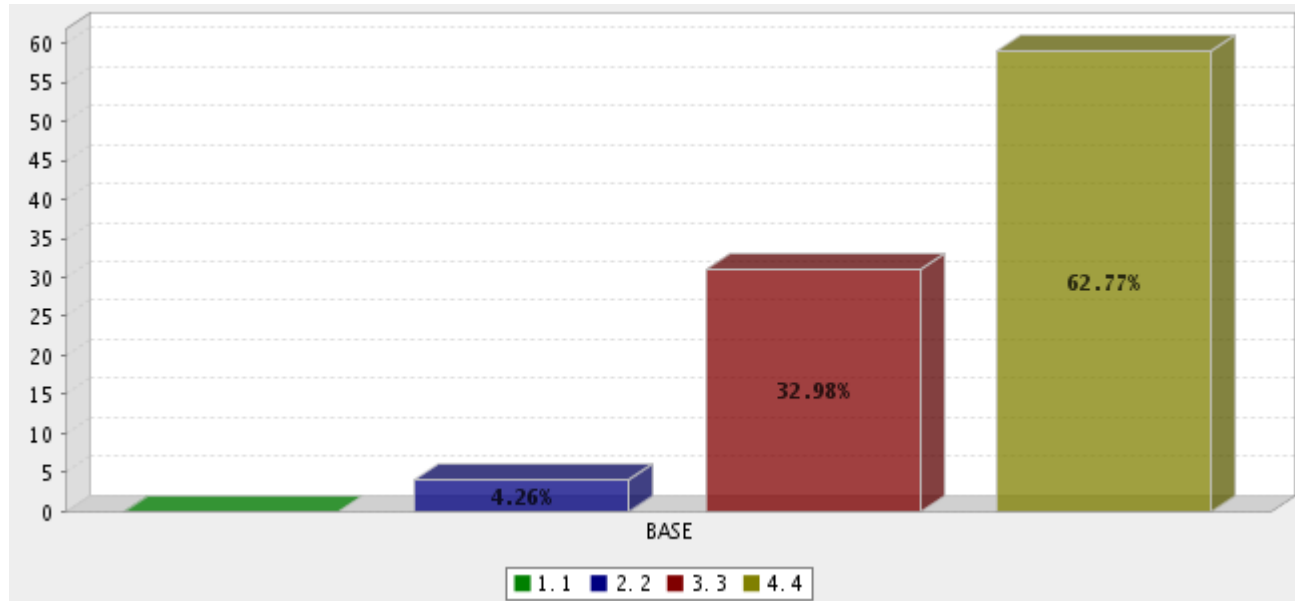
Access to Government Leaders (1 Poor....4 Excellent)



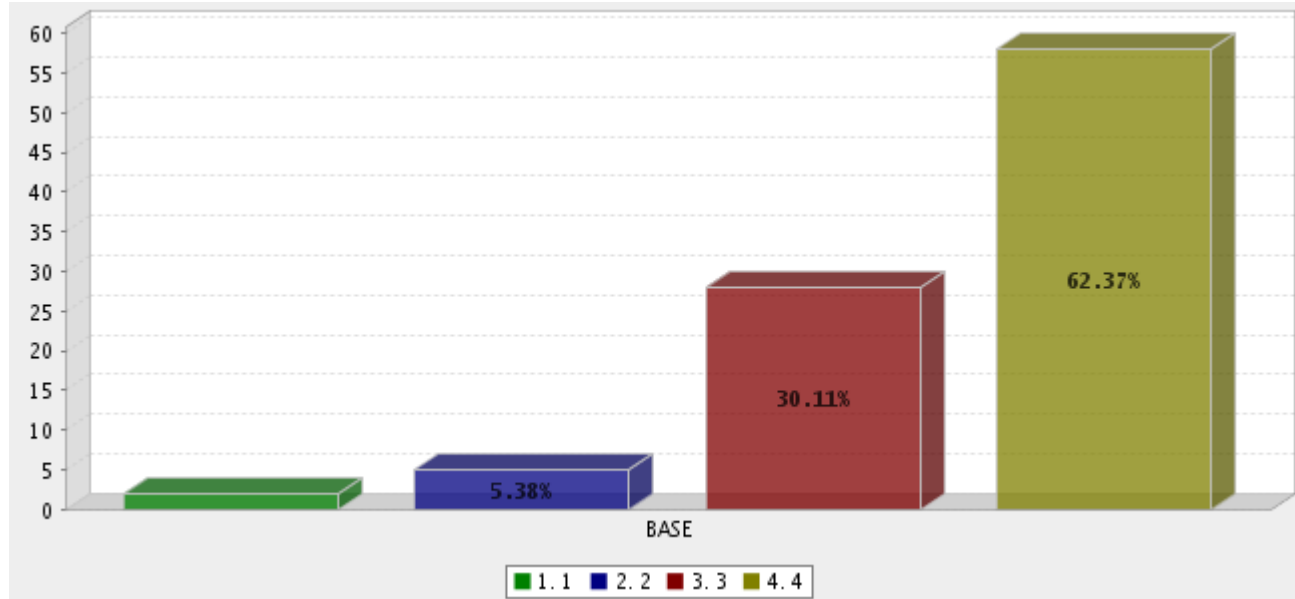
Networking Opportunities (1 Poor....4 Excellent)



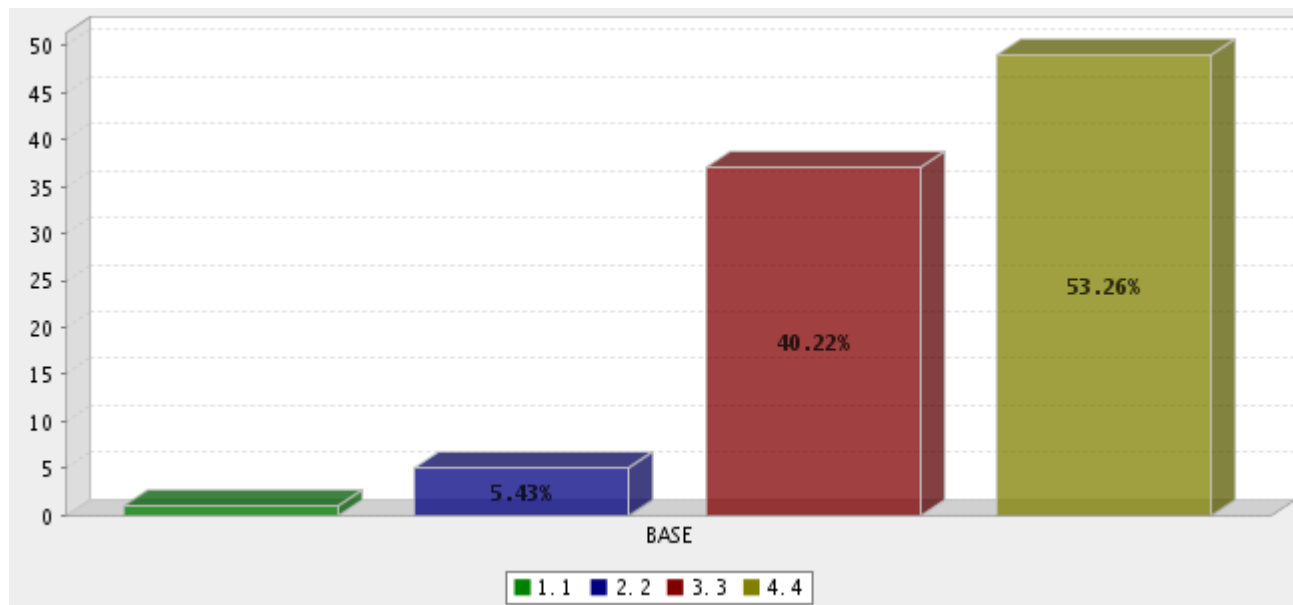
The Atlantic City Convention Center and hotel accommodations were safe, convenient and sufficient (1 Poor....4 Excellent)



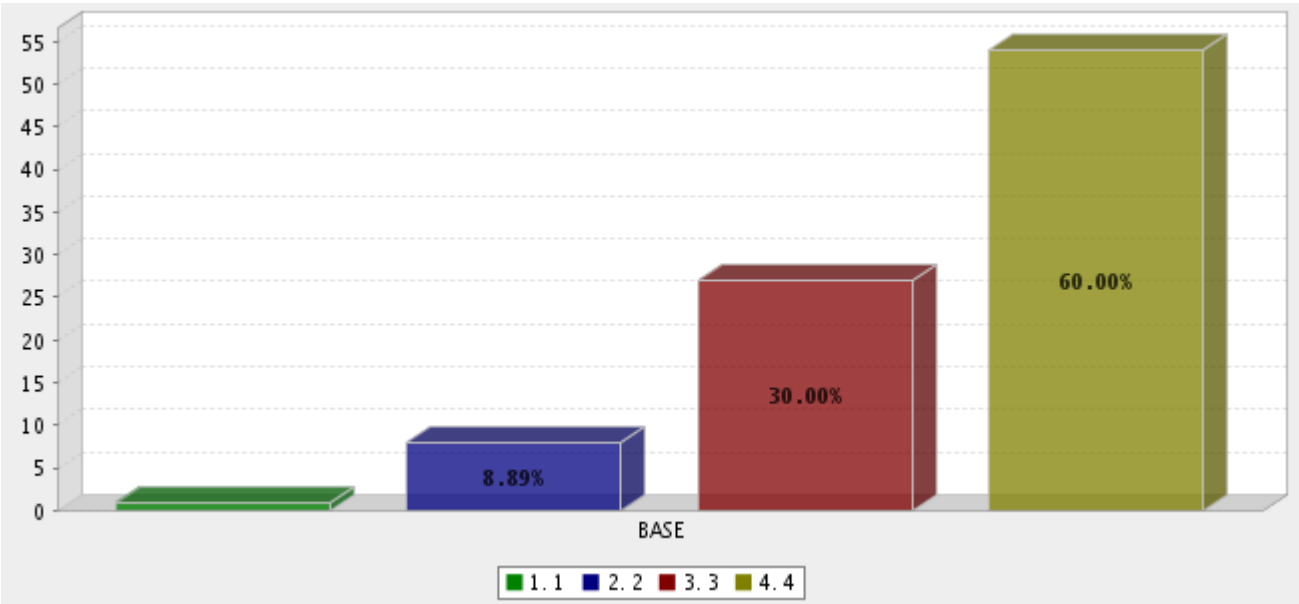
The League education workshops/sessions were valuable for your municipality (1 Poor....4 Excellent)



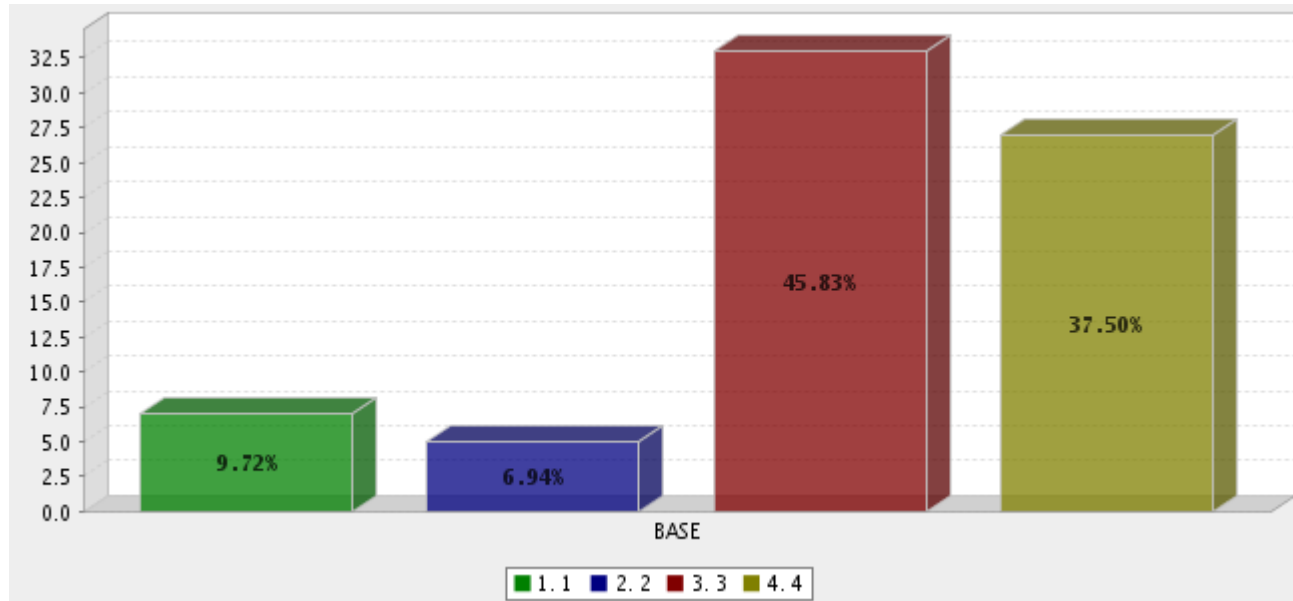
The information, education and networking opportunities the conference provided helps address problems or issues in your municipality (1 Poor....4 Excellent)



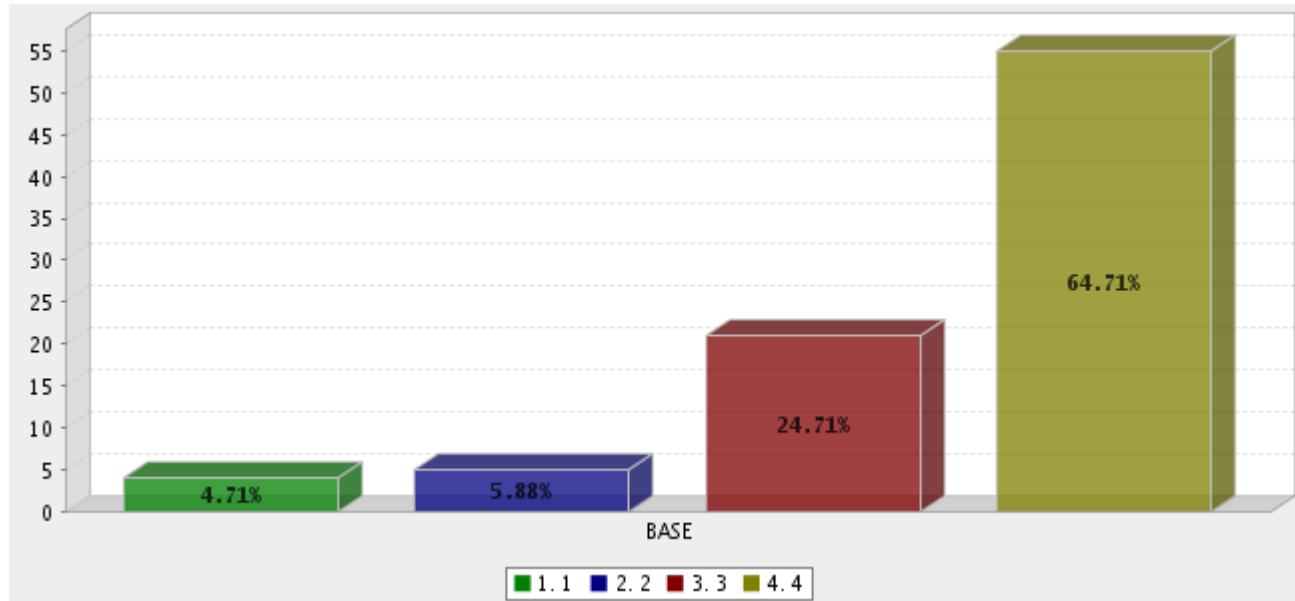
Exhibits added to the value of the conference (1 Poor....4 Excellent)



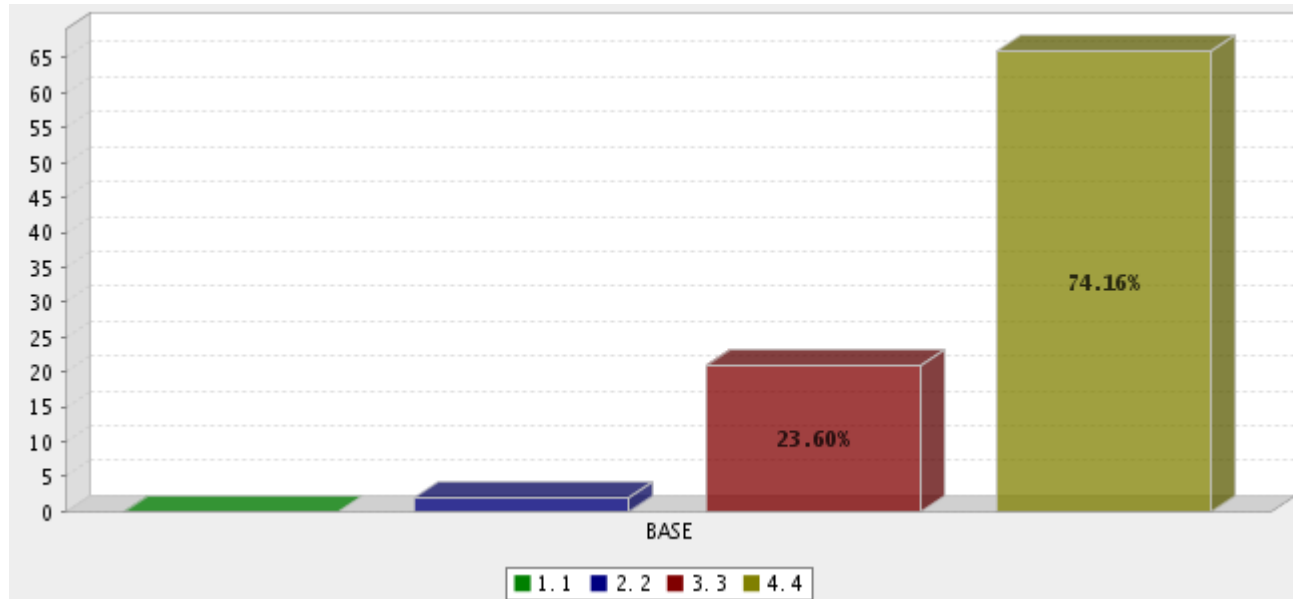
The Tuesday afternoon Consulting Period was a good value (1 Poor....4 Excellent)



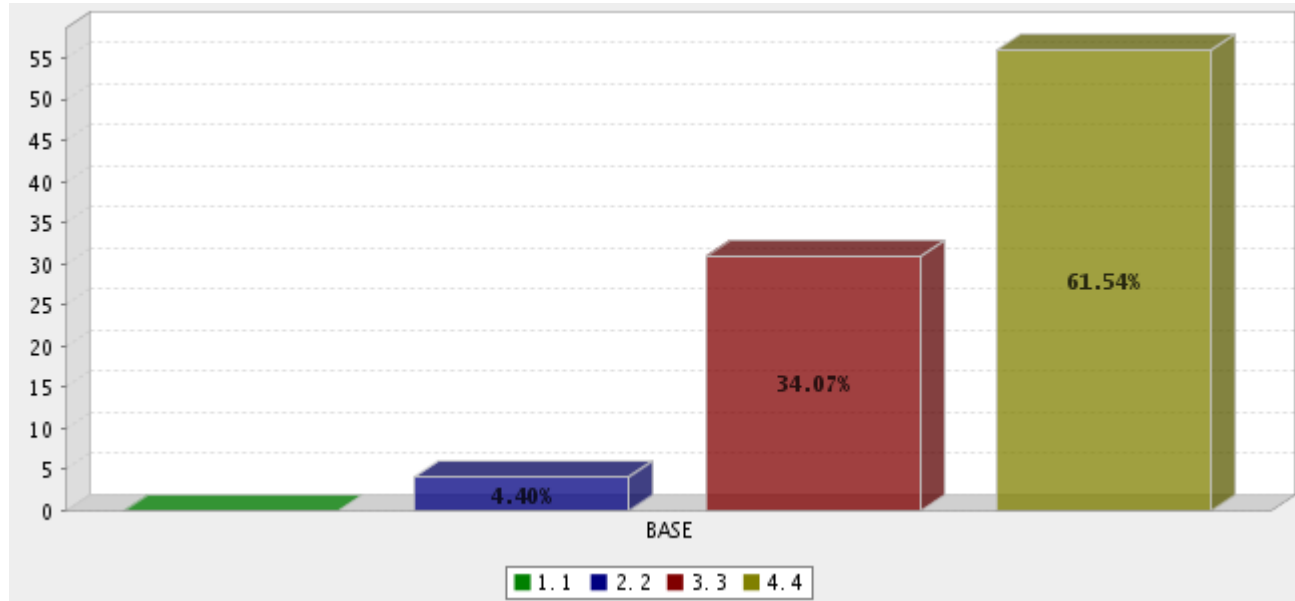
The shuttle bus service was a well-coordinated, efficient and convenient transportation system (1 Poor....4 Excellent)



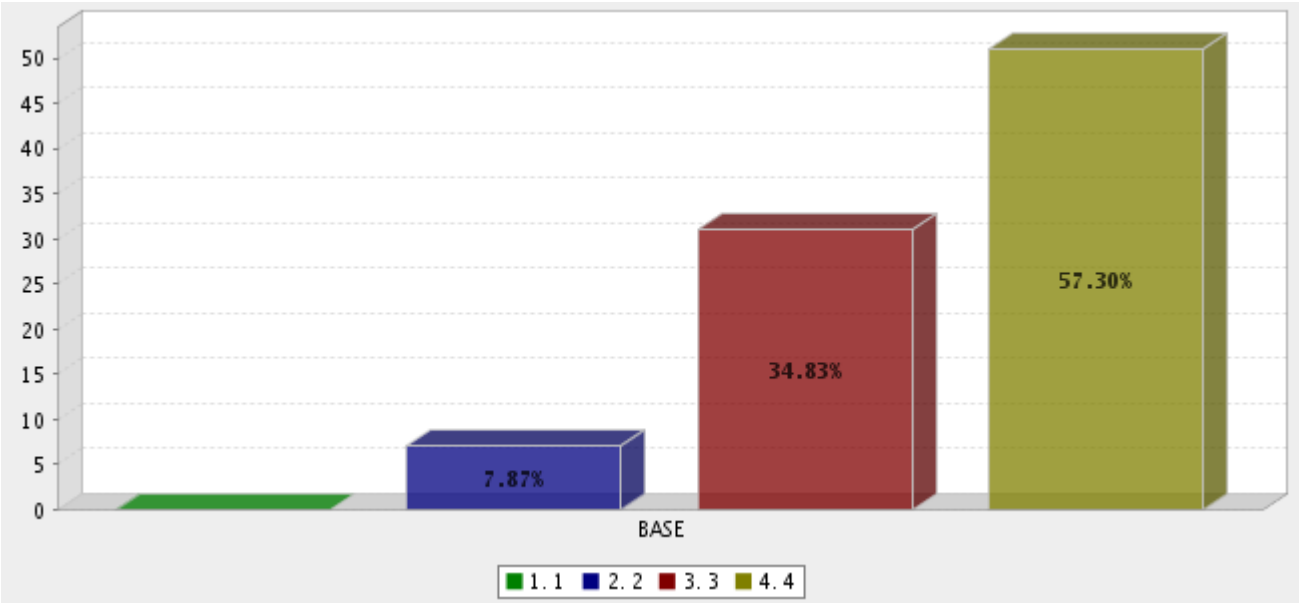
The League staff was informative and responsive during the conference (1 Poor....4 Excellent)



Quality (1 Poor....4 Excellent)



Effectiveness (1 Poor....4 Excellent)



Relevance (1 Poor....4 Excellent)

